



the peony

3 BEDROOMS

OVERALL 87.8 M² | 946 FT²

Open plan living with a spacious living room leading into a modern kitchen-diner to the rear of the property and patio doors leading onto the garden.

Upstairs features two double bedrooms, one with en-suite, a single bedroom and a family bathroom.





the peony

3 BEDROOMS

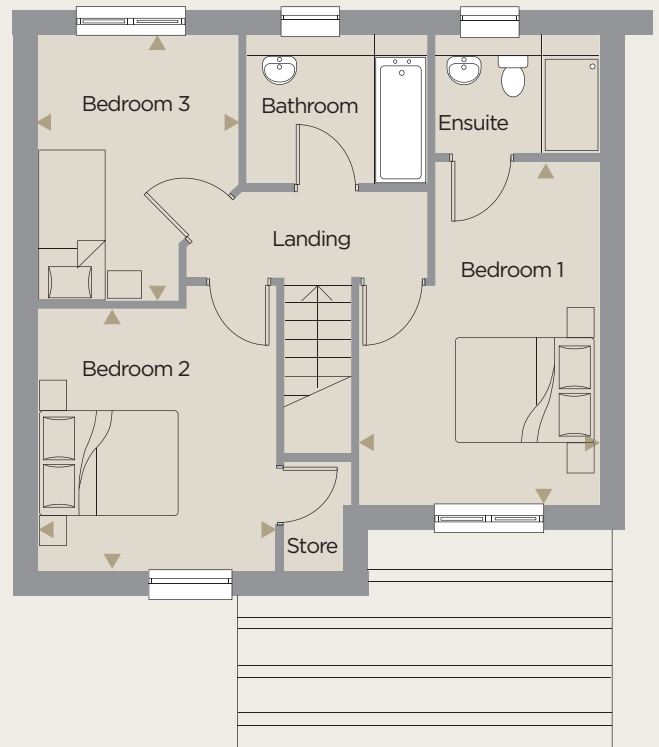
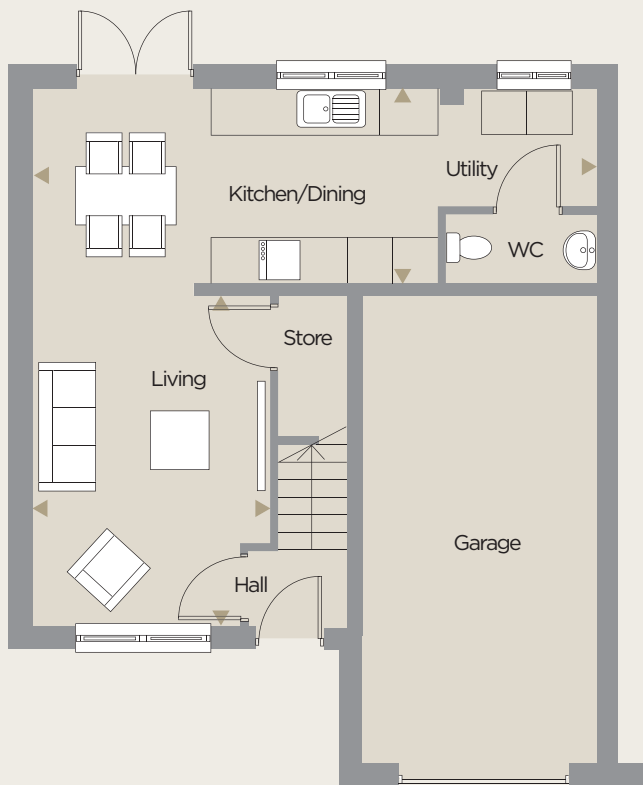
OVERALL 87.8 M² | 946 FT²

Ground	Metric (m)	Imperial
Living	3.19 x 4.39	10'5" x 14'4"
Kitchen / Dining	7.47 x 2.61	24'6" x 8'6"

Measurements taken between ◀ ▶

First	Metric (m)	Imperial
Bed 1	3.22 x 4.56	10'6" x 14'11"
En-suite	2.21 x 1.61	7'3" x 5'3"
Bed 2	3.19 x 3.52	10'5" x 11'6"
Bed 3	2.69 x 3.55	8'9" x 11'7"
Bathroom	2.47 x 2.00	8'1" x 6'6"

Measurements taken between ◀ ▶



All travel times, distances, companies, businesses and trading names are believed to be correct at the time of going to print, but any prospective buyer should make their own enquiries. All materials and kitchen/bathroom layouts are indicative only and the final layout, materials, colour and external elevations are subject to change. Whilst every effort has been made to ensure that the information contained in this brochure is correct, it is designed specifically as a guide and Ascent Homes reserves the right to amend the specification as necessary and without notice. This does not constitute or form any part of a contract of sale. November 2023.