



the haven

4 BEDROOMS

OVERALL 124.53 M² | 1340 FT²

The ground floor of this three-storey home offers a living room to the front and a spacious kitchen-diner with bi-fold doors to the rear.

The first floor comprises two double bedrooms, one with en-suite, a single bedroom and a family bathroom.

The second floor is dedicated solely to the master bedroom, featuring en-suite and separate storage space.





the haven

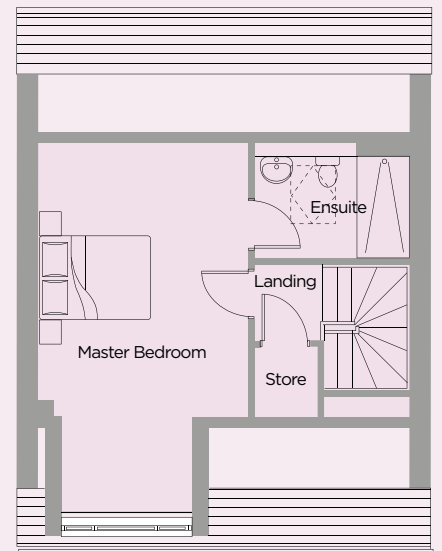
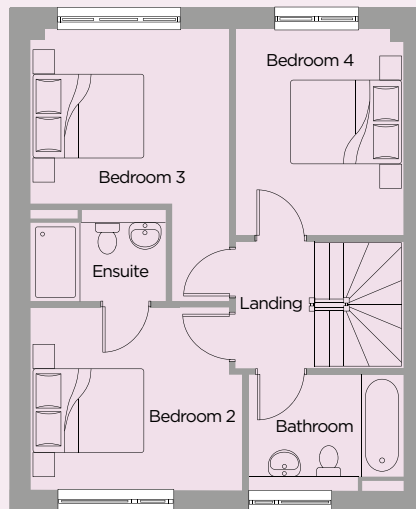
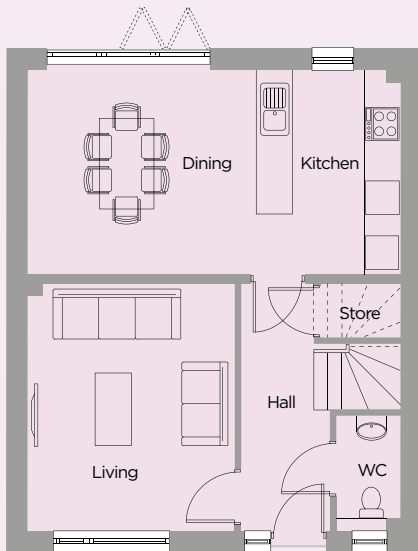
4 BEDROOMS

OVERALL 124.53 M² | 1340 FT²

Ground	Metric (m)	Imperial
Living	3.45 x 4.16	11'3" x 13'7"
Kitchen / Dining	6.19 x 3.39	20'3" x 11'1"
Hall	1.47 x 4.16	4'11" x 13'7"

First	Metric (m)	Imperial
Bed 2	3.53 x 3.05	11'6" x 10'0"
En-suite	2.26 x 1.55	7'4" x 5'1"
Bed 3	3.31 x 2.91	10'10" x 9'6"
Bed 4	2.81 x 3.43	9'2" x 11'3"
Bathroom	2.59 x 1.96	8'5" x 6'5"

Second	Metric (m)	Imperial
Bed 1	3.54 x 6.13	11'7" x 20'1"
En-suite	2.58 x 1.91	8'5" x 6'3"



All travel times, distances, companies, businesses and trading names are believed to be correct at the time of going to print, but any prospective buyer should make their own enquiries. All materials and kitchen/bathroom layouts are indicative only and the final layout, materials, colour and external elevations are subject to change. Whilst every effort has been made to ensure that the information contained in this brochure is correct, it is designed specifically as a guide and Ascent Homes reserves the right to amend the specification as necessary and without notice. This does not constitute or form any part of a contract of sale. July 2022.