



the birch

2 BEDROOMS

OVERALL 63 M² | 678 FT²

A central hallway opens up to a spacious kitchen-lounge with French doors. To the right and left are two double bedrooms



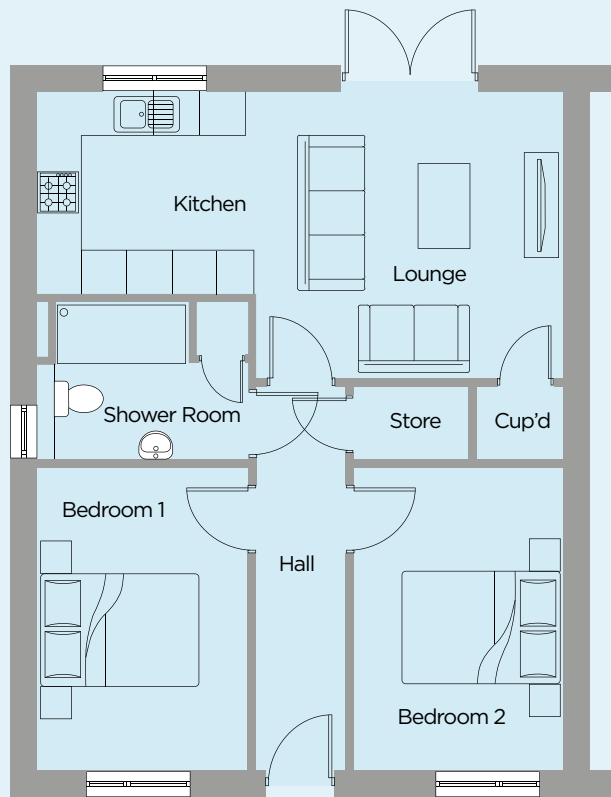


the birch

2 BEDROOMS

OVERALL 63 M² | 678 FT²

	Metric (m)	Imperial
Living / Kitchen	7.04 x 3.85	23'1" x 12'7"
Bed 1	2.85 x 4.05	9'4" x 13'3"
Bed 2	2.83 x 4.05	9'3" x 13'3"



All travel times, distances, companies, businesses and trading names are believed to be correct at the time of going to print, but any prospective buyer should make their own enquiries. All materials and kitchen/bathroom layouts are indicative only and the final layout, materials, colour and external elevations are subject to change. Whilst every effort has been made to ensure that the information contained in this brochure is correct, it is designed specifically as a guide and Ascent Homes reserves the right to amend the specification as necessary and without notice. This does not constitute or form any part of a contract of sale. July 2022.