



the primrose

3 BEDROOMS

OVERALL 100.10M² | 1077 FT²

To the front of the ground floor of this three-storey property is a modern fitted kitchen, complete with dining area.

To the rear is a large living space, featuring bi-fold doors opening out to the rear aspect.

On the first floor are two double bedrooms and a large family bathroom. Upstairs to the top floor of the property is the master bedroom, featuring a dressing space and en-suite.





the primrose

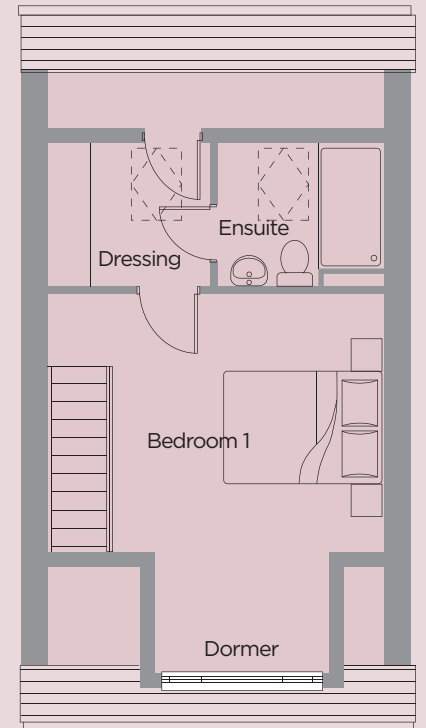
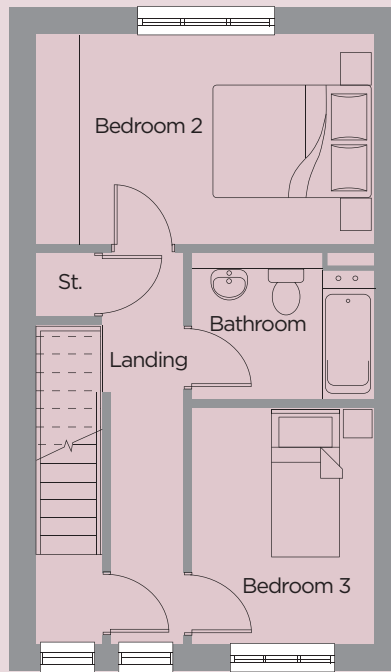
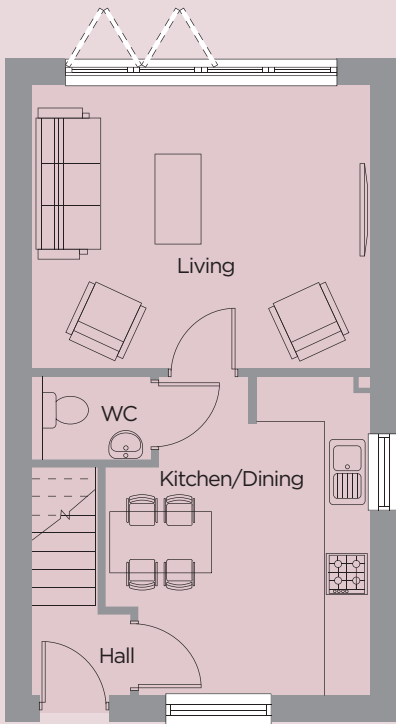
3 BEDROOMS

OVERALL 100.10M² | 1077 FT²

Ground	Metric (m)	Imperial
Living	4.53 x 3.74	14'10" x 12'3"
Kitchen / Dining	3.53 x 4.29	11'6" x 14'0"

First	Metric (m)	Imperial
Bed 2	4.53 x 2.80	14'10" x 9'2"
Bed 3	2.46 x 3.19	8'0" x 10'5"
Bathroom	2.46 x 1.97	8'0" x 6'5"

Second	Metric (m)	Imperial
Bed 1	4.53 x 4.50	14'10" x 14'9"
En-suite	2.26 x 1.82	7'4" x 5'11"
Dressing	2.20 x 1.82	7'2" x 5'11"



All travel times, distances, companies, businesses and trading names are believed to be correct at the time of going to print, but any prospective buyer should make their own enquiries. All materials and kitchen/bathroom layouts are indicative only and the final layout, materials, colour and external elevations are subject to change. Whilst every effort has been made to ensure that the information contained in this brochure is correct, it is designed specifically as a guide and Ascent Homes reserves the right to amend the specification as necessary and without notice. This does not constitute or form any part of a contract of sale. November 2022.