



HEBRON HOUSE

4 BEDROOMS

Downstairs a spacious central hall has the convenience of a downstairs cloakroom. Leading from the hall there is a contemporary kitchen, dining/family room.

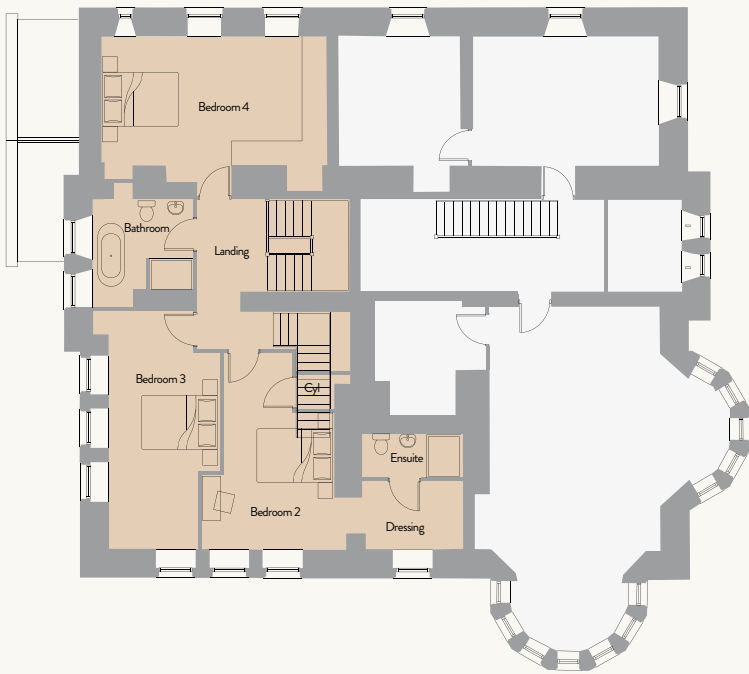
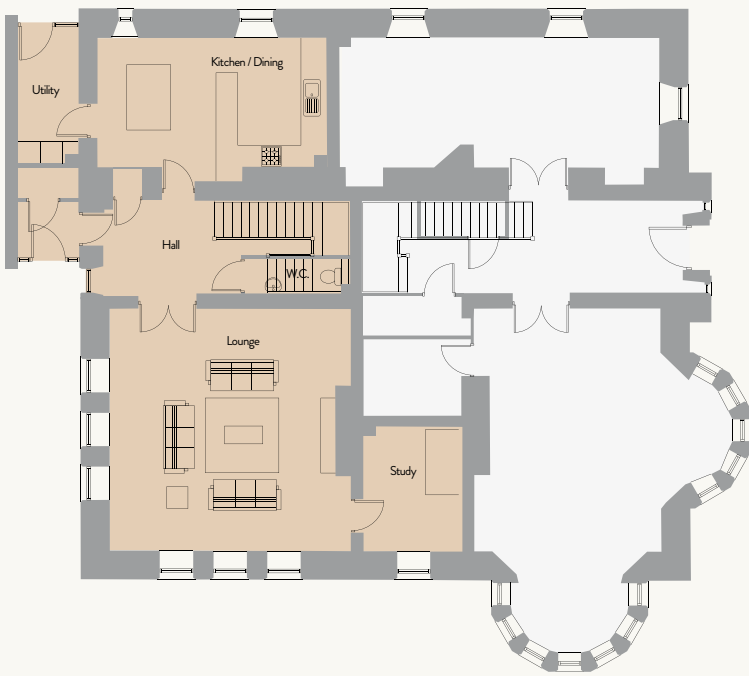
Double doors from the hall lead into a separate living room. Striking triple arch windows add elegance to the two outside walls of this spacious living room.

The first floor modern family bathroom is directly at the top of the stairs and is adjacent to two double bedrooms. This floor also boasts another double bedroom with a separate dressing area and en-suite bathroom.

On the second floor there is an impressive master bedroom with luxurious en-suite.

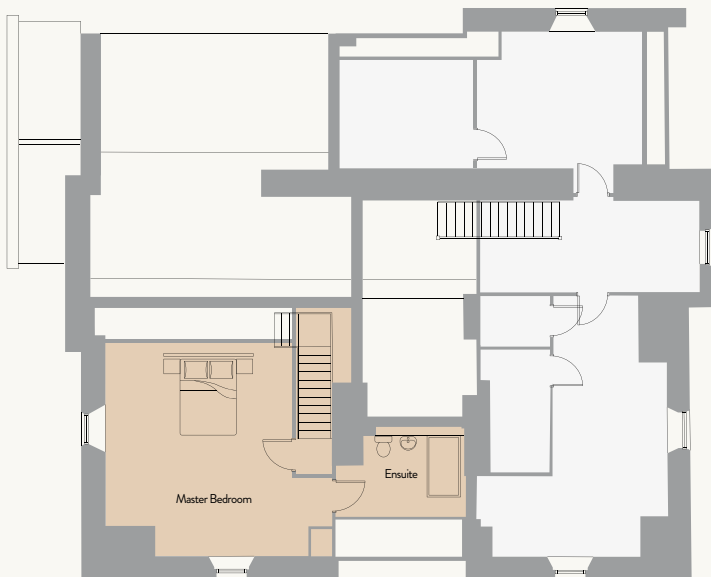
[See the specification here](#)





Ground	Metric (m)	Imperial
Lounge	6.54 x 6.54	21' 6" x 21' 6"
Kitchen /Dining	6.07 x 3.46	19' 11" x 11' 4"
Utility	1.67 x 3.46	5' 5" x 11' 4"
WC	2.89 x 0.92	9' 6" x 3' 0"
Study	2.52 x 3.40	8' 3" x 11' 2"

First	Metric (m)	Imperial
Bedroom 2	3.98 x 5.41	13' 1" x 17' 9"
En-suite	2.56 x 1.41	8' 5" x 4' 8"
Dressing	2.56 x 1.85	8' 5" x 6' 1"
Bedroom 3	3.04 x 6.54	10' 0" x 21' 6"
Bedroom 4	6.10 x 3.92	20' 0" x 12' 10"
Bathroom	2.76 x 2.98	9' 1" x 9' 10"



Second	Metric (m)	Imperial
Bedroom 1	6.23 x 5.85	20' 5" x 19' 3"
En-suite	2.56 x 2.44	8' 5" x 8' 0"
Overall	248 m²	2669 ft²

■ Hebron House
■ Oakwood House

All travel times, distances, companies, businesses and trading names are believed to be correct at the time of going to print, but any prospective buyer should make their own enquiries. All materials and kitchen/bathroom layouts are indicative only and the final layout, materials, colour and external elevations are subject to change. Whilst every effort has been made to ensure that the information contained in this brochure is correct, it is designed specifically as a guide and Ascent Homes reserves the right to amend the specification as necessary and without notice. This does not constitute or form any part of a contract of sale. October 2023.