



# the maple

3 BEDROOMS

OVERALL 89.8 M<sup>2</sup> | 967 FT<sup>2</sup>

A hallway leads through to the kitchen-diner and then onto a spacious living room to the rear of the property, with patio doors leading onto the garden.

Upstairs features two double bedrooms, one with ensuite, a single bedroom and a family bathroom.





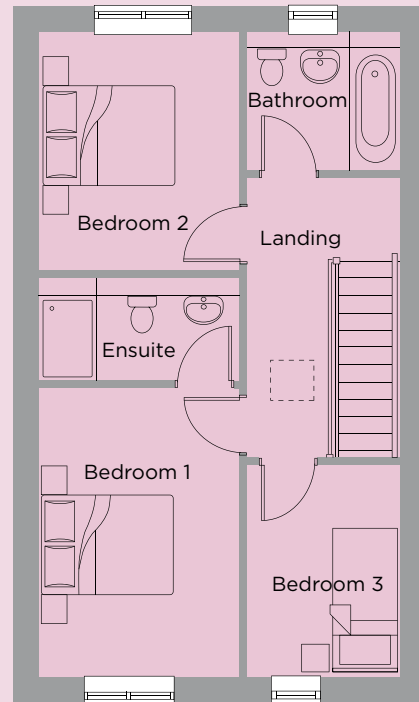
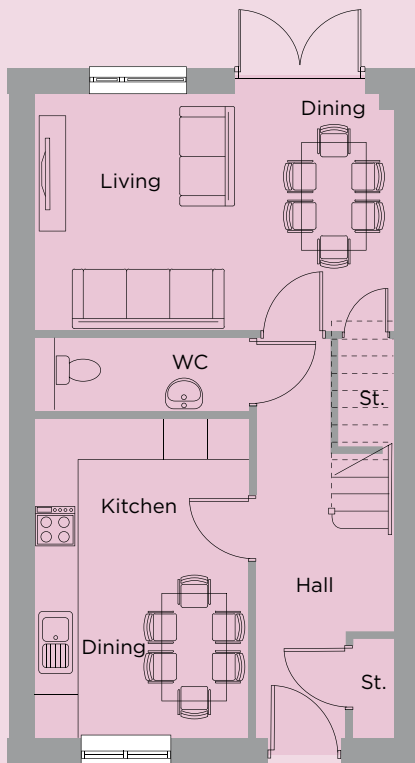
# the maple

3 BEDROOMS

OVERALL 89.8 M<sup>2</sup> | 967 FT<sup>2</sup>

Ground	Metric (m)	Imperial
Living	5.07 x 3.35	16'7" x 10'11"
Kitchen / Dining	3.03 x 4.49	9'11" x 14'8"

First	Metric (m)	Imperial
Bed 1	2.86 x 4.07	9'4" x 13'4"
Bed 2	2.86 x 3.37	9'4" x 11'0"
Bed 3	2.13 x 2.99	6'11" x 9'9"



All travel times, distances, companies, businesses and trading names are believed to be correct at the time of going to print, but any prospective buyer should make their own enquiries. All materials and kitchen/bathroom layouts are indicative only and the final layout, materials, colour and external elevations are subject to change. Whilst every effort has been made to ensure that the information contained in this brochure is correct, it is designed specifically as a guide and Ascent Homes reserves the right to amend the specification as necessary and without notice. This does not constitute or form any part of a contract of sale. May 2023.