



the granary

4 BEDROOMS

OVERALL 117.2 M² | 1261 FT²

The ground floor of this stunning property comprises a large airy lounge with bi-fold doors, a separate dining room and a contemporary family kitchen-diner. Downstairs is completed by a utility room and storage space.

Upstairs boasts three double bedrooms, one with ensuite, a single bedroom and a family bathroom.





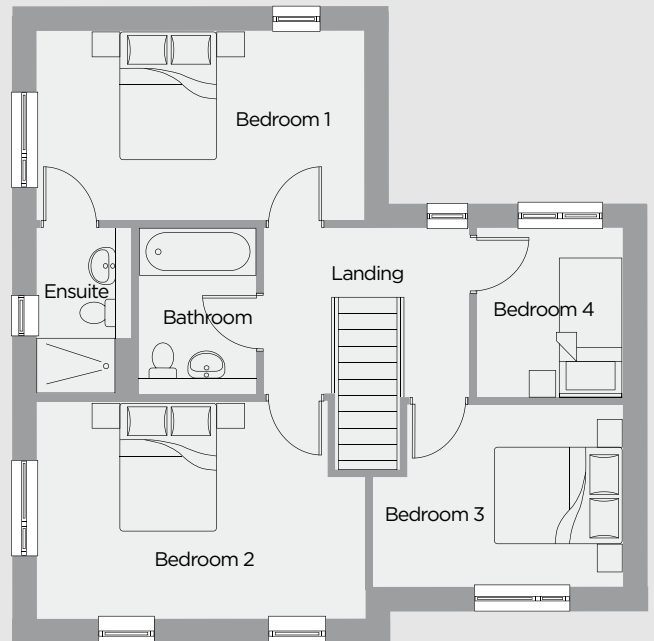
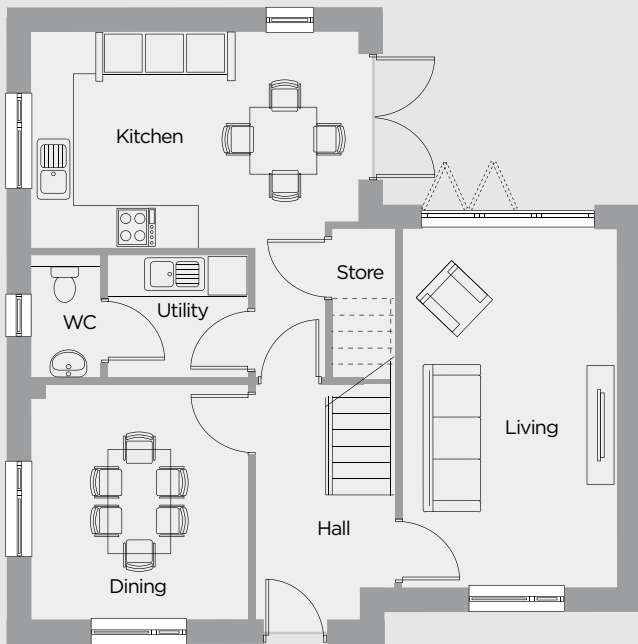
the granary

4 BEDROOMS

OVERALL 117.2 M² | 1261 FT²

Ground	Metric (m)	Imperial
Living	3.08 x 5.14	10'1" x 16'10"
Kitchen	4.70 x 3.10	15'5" x 10'2"
Utility	2.02 x 1.75	6'8" x 5'9"
Dining	3.12 x 3.37	10'3" x 11'1"
Hall	1.99 x 3.37	6'6" x 11'1"

First	Metric (m)	Imperial
Bed 1	4.70 x 2.73	15'5" x 9'0"
Ensuite	1.37 x 2.39	4'6" x 7'10"
Bed 2	4.70 x 3.10	15'5" x 10'2"
Bed 3	3.62 x 2.60	11'10" x 8'6"
Bed 4	2.11 x 2.44	6'11" x 8'0"
Bathroom	1.69 x 2.39	5'6" x 7'10"



All travel times, distances, companies, businesses and trading names are believed to be correct at the time of going to print, but any prospective buyer should make their own enquiries. All materials and kitchen/bathroom layouts are indicative only and the final layout, materials, colour and external elevations are subject to change. Whilst every effort has been made to ensure that the information contained in this brochure is correct, it is designed specifically as a guide and Ascent Homes reserves the right to amend the specification as necessary and without notice. This does not constitute or form any part of a contract of sale. October 2023.