

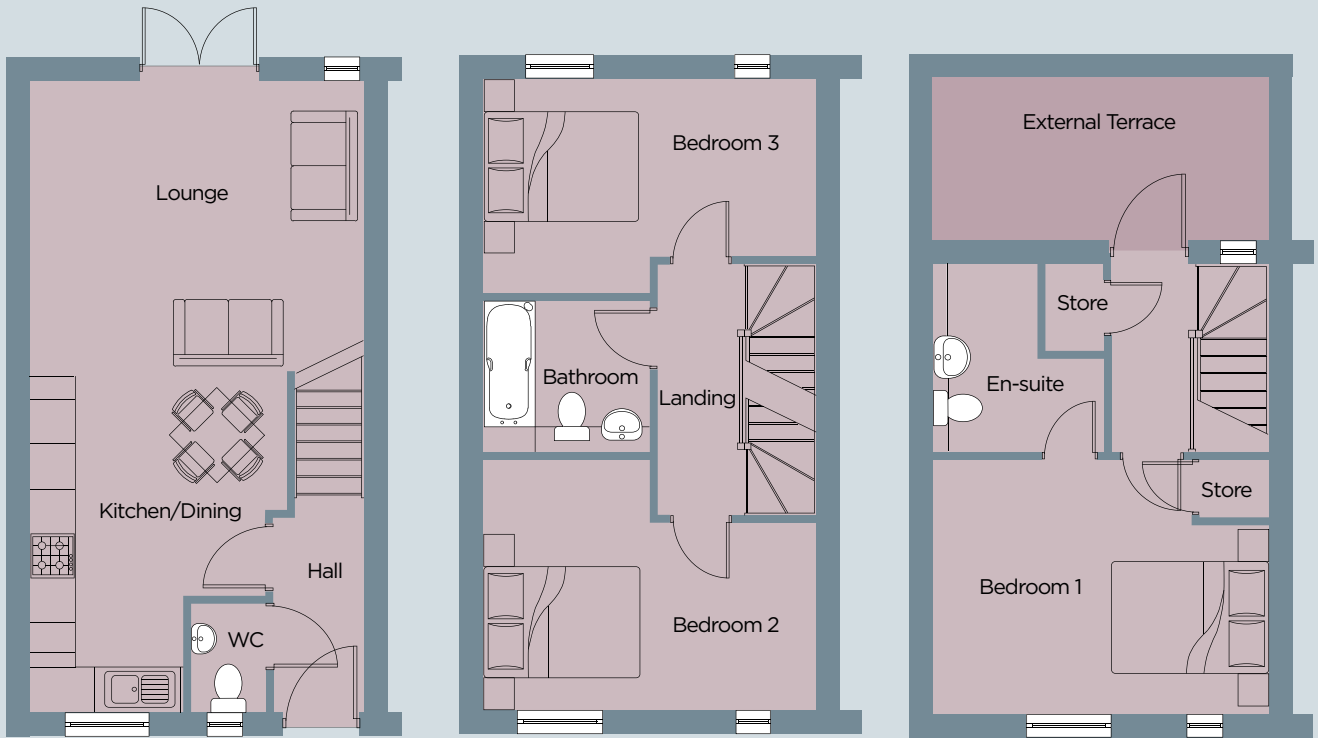
LIBERTY

3 BEDROOM HOUSE TYPE

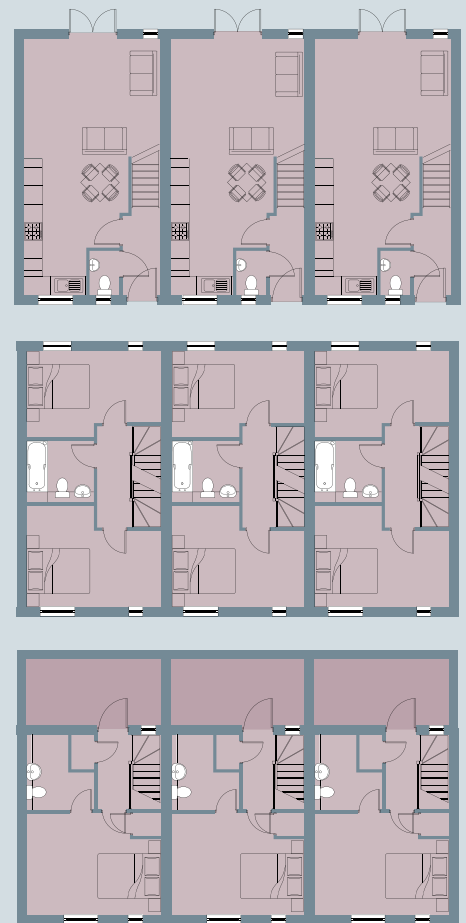
OVERALL 103.7 M² | 1116 FT²

A more traditional approach to the three-storey home, this property boasts a lounge with separate kitchen-diner to the ground floor. The middle floor features two double bedrooms and a family bathroom. Whilst the top floor boasts a large master bedroom with en-suite and external roof terrace to soak in the views.





WINDOW POSITIONING



Ground	Metric (m)	Imperial
Kitchen/Living	4.45 x 8.45	14'7" x 27'8"
First Floor	Metric (m)	Imperial
Bedroom 2	4.45 x 3.36*	14'7" x 11'0"*
Bedroom 3	4.45 x 2.87*	14'7" x 9'4"*
Second Floor	Metric (m)	Imperial
Bedroom 1	4.45 x 3.39	14'7" x 11'1"

* Longest dimension